



HCA NATIONAL LEADERSHIP & DEVELOPMENT FORUM

Thursday 20th and Friday 21st April 2023

Hilton Birmingham Metropole, NEC

# Global Food Economy

---

Dr Ed Maile

Global Centre for Healthy Food Environment Sprink

Dr Thomas Kelley

Global Centre for Healthy Food Environment Sprink

A low-angle photograph looking up at four people's heads against a bright blue sky with scattered white clouds. The people are positioned around the perimeter of a large, semi-transparent orange circle that dominates the frame. The person on the left is a Black man with a beard, looking upwards. The person on the right is a white woman with blonde hair, also looking up. The other two people are partially visible at the top of the circle. The overall mood is hopeful and aspirational.

Sprink



Sprink

# Global food systems: The challenge & opportunity for health care

**Dr Thomas Kelley**  
CEO, Sprink

**Dr Ed Maile**  
Associate Director, Global Centre for Healthy Food  
Environments, Sprink





# **Agenda**

- 1. Global food system: Key challenges**
- 2. What is Sprink?**
- 3. The Global Centre for Healthy Food Environments**
- 4. Our research**
- 5. Engaging with us**

# Global food system challenges

---

01

**Public health crisis**

02

**Climate & biodiversity  
emergency**

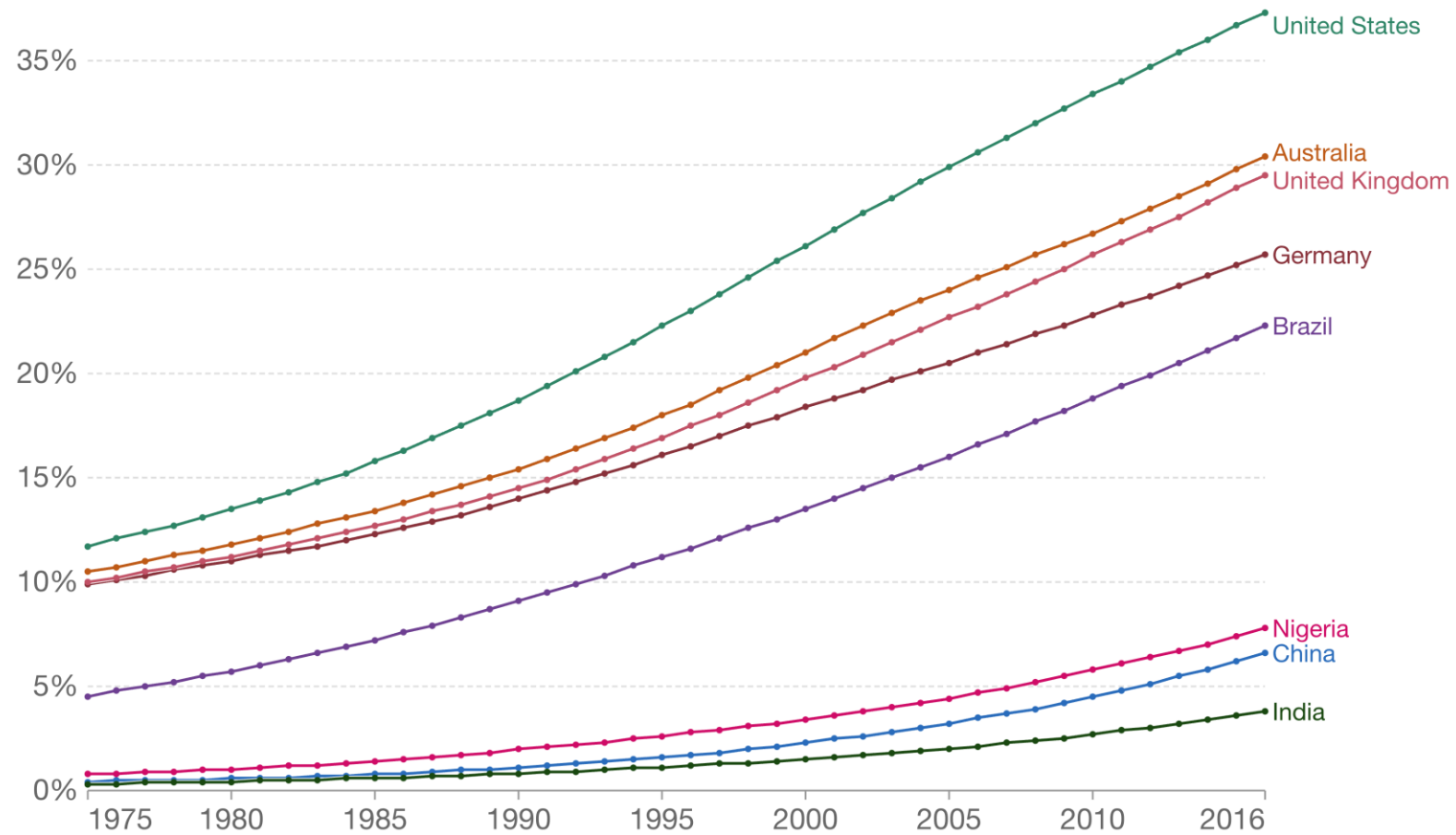
03

**Worker & animal welfare  
challenges**

## Share of adults that are obese, 1975 to 2016



Obesity is defined as having a body-mass index (BMI) equal to, or greater than, 30. BMI is a person's weight (in kilograms) divided by their height (in meters) squared.



Source: WHO, Global Health Observatory (2022)

OurWorldInData.org/obesity • CC BY

Unhealthy diets cause **8 million deaths** from non-communicable disease (NCD) each year. This is **19% of all NCD deaths**.

**PLOS ONE**

OPEN ACCESS PEER-REVIEWED

RESEARCH ARTICLE

**Etiologic effects and optimal intakes of foods and nutrients for risk of cardiovascular diseases and diabetes: Systematic reviews and meta-analyses from the Nutrition and Chronic Diseases Expert Group (NutriCoDE)**

THE LANCET

ARTICLES | VOLUME 380, ISSUE 9859, P2224-2260, DECEMBER 15, 2012

A comparative risk assessment of burden of disease and injury attributable to 67 risk factors and risk factor clusters in 21 regions, 1990–2010: a systematic analysis for the Global Burden of Disease Study 2010

Dr Stephen S Lim, PhD, Prof Theo Vos, PhD, Abraham D Flaxman, PhD, Goodarz Danaei, MD, Prof Kenji Shibuya, MD, Heather Adair-Rohani, MPH, et al. Show all authors • Show footnotes

Published: December 15, 2012 • DOI: [https://doi.org/10.1016/S0140-6736\(12\)61766-8](https://doi.org/10.1016/S0140-6736(12)61766-8)

**atherosclerosis**

Submit Log in Register

Articles Publish Topics About Contact

REVIEW | VOLUME 234, ISSUE 2, P320-328, JUNE 2014

**Dietary fats and cardiovascular disease: Putting together the pieces of a complicated puzzle**

George Michas • Renata Micha • Antonis Zampelas

Published: March 27, 2014 • DOI: <https://doi.org/10.1016/j.atherosclerosis.2014.03.013>

**JAMA Network**

**JAMA**

Search All

**This Issue** Views 229,484 | Citations 548 | Altmetric 2924

PDF More Cite Permissions

**Original Investigation**

March 7, 2017

**Association Between Dietary Factors and Mortality From Heart Disease, Stroke, and Type 2 Diabetes in the United States**

**JAMA Network**

**JAMA Internal Medicine** Search All

**This Issue** Citations 919

PDF More Cite Permissions

**Review**

April 13, 2009

**A Systematic Review of the Evidence Supporting a Causal Link Between Dietary Factors and Coronary Heart Disease**

**Nutrition Reviews**

CELEBRATING 80 YEARS

Issues More Content Submit Purchase Alerts About

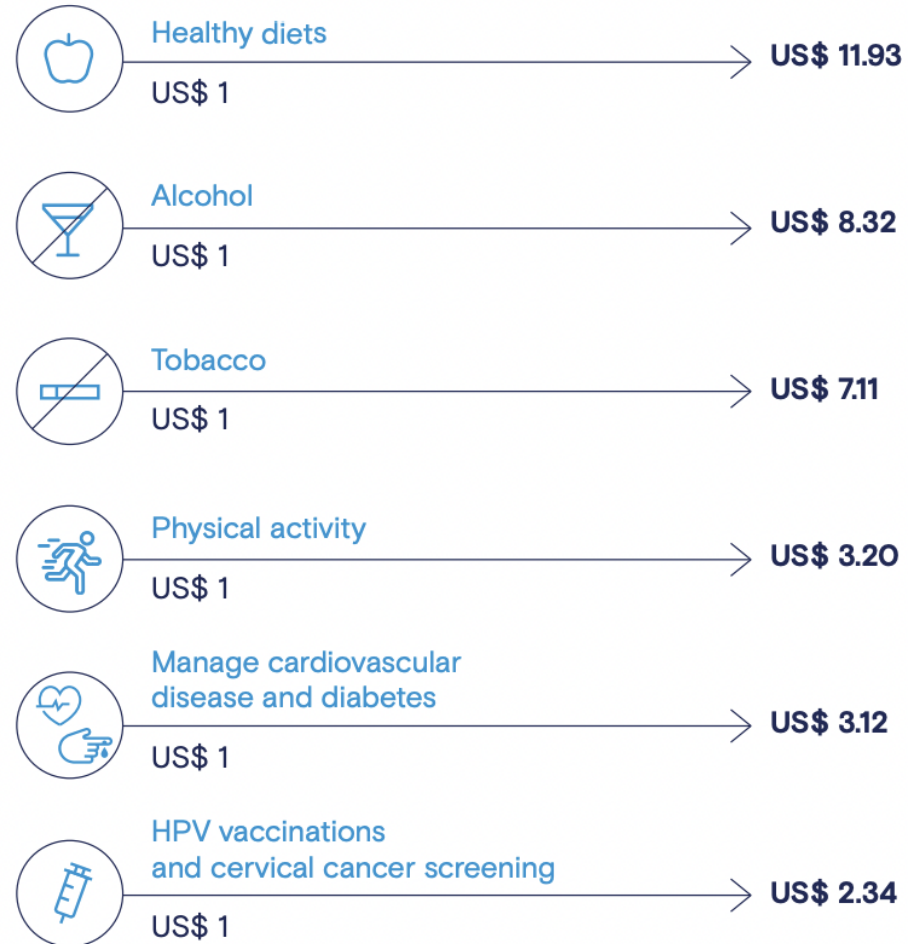
Nutrition Reviews

**JOURNAL ARTICLE**

**Associations between food and beverage groups and major diet-related chronic diseases: an exhaustive review of pooled/meta-analyses and systematic reviews**

Anthony Fardet, Yves Boirie

### Return on investment for specific intervention areas



Source: Saving lives, spending less: the case for investing in noncommunicable diseases. Geneva: World Health Organization; 2021 (43)



# Climate & biodiversity emergency

- The global food system produces over **one-third of greenhouse gas emissions** globally.
- Sources include changes in land use, livestock, processing, packaging, storage and transport.
- It also also the world's **leading cause of biodiversity loss**.

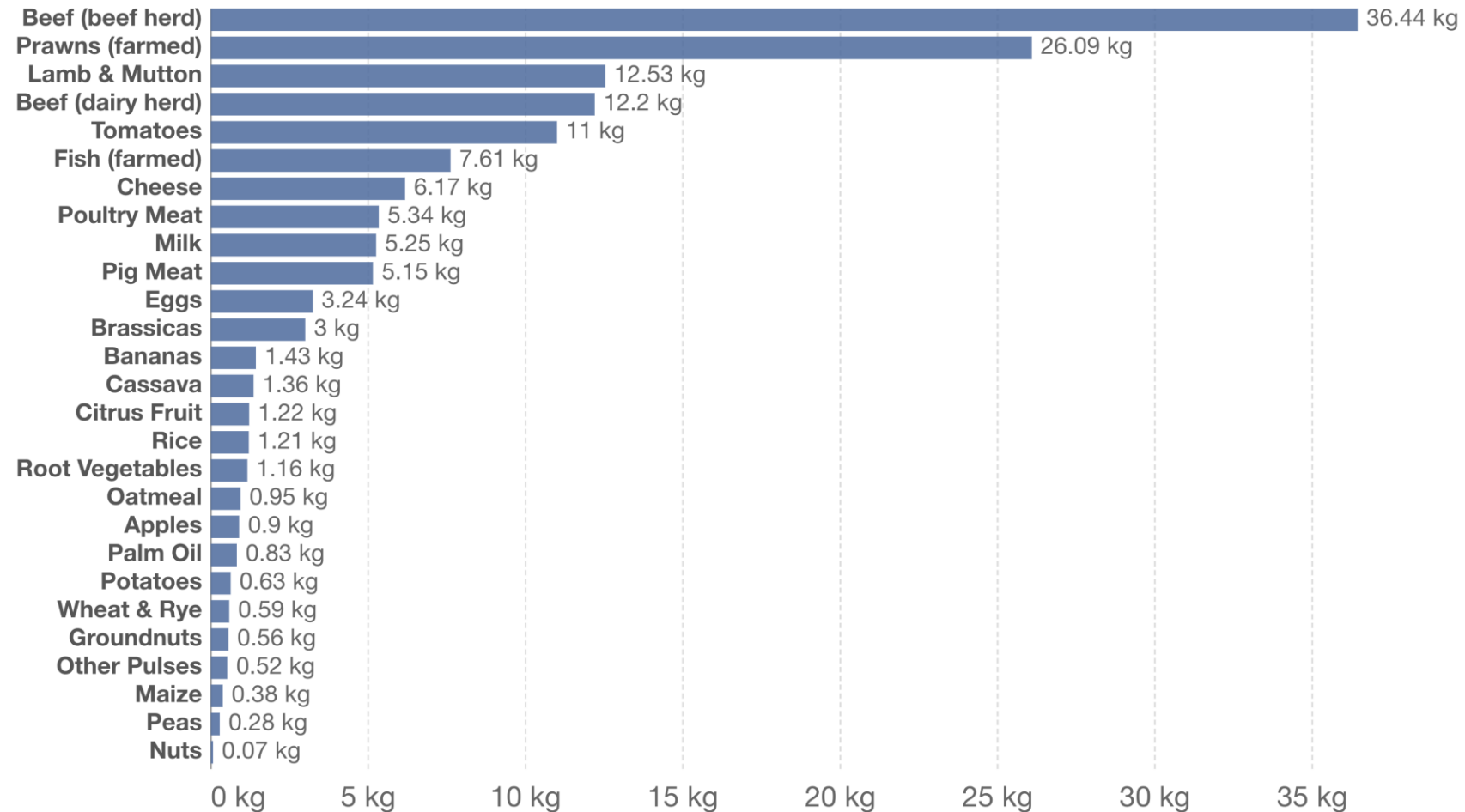




# Greenhouse gas emissions per 1000 kilocalories

Our World  
in Data

Greenhouse gas emissions<sup>1</sup> are measured in carbon dioxide-equivalents (CO<sub>2</sub>eq)<sup>2</sup>.



Source: Joseph Poore and Thomas Nemecek (2018). Additional calculations by Our World in Data.  
OurWorldInData.org/environmental-impacts-of-food • CC BY

# Worker & animal welfare challenges

---



## Forced labour

2.1 million people in modern slavery globally work in agriculture.



## UK modern slavery

13% of potential forced labour victims in the UK work in food or agriculture.



## Animal welfare

Meat production is the largest cause of animal suffering, with about 70 billion animals farmed for food each year, mostly in factory farms.





# Food challenges for international health care systems

---



01

## Population health

Health care systems globally are moving towards proactive, preventative health care. Healthy Food Environments allow hospitals to lead by example.



02

## Staff wellbeing

Health care workers around the world are experiencing poor mental and physical health. Healthy food at work is part of the solution.



03

## Net zero

Many health care systems internationally are working to achieve net zero. Decarbonising food supply chains is key to this.

# Agenda

1. Global food system: Key challenges
2. What is Sprink?
3. The Global Centre for Healthy Food Environments
4. Our research
5. Engaging with us



# Vision

---

Sprink is a for-profit organisation with a strong social purpose.

*Our vision is to enable all people to enjoy the health and care outcomes that matter to them, sustainably.*





# Focus areas

---



## Global Centre for Person-Centred Value-Based Health Care

Working to help people enjoy the health outcomes that matter to them at that particular point in their lives.



## Global Centre for Healthy Food Environments

Working to support the provision of healthy, sustainable and ethical food to patients, staff and visitors in health care settings.

# Agenda

1. Global food system: Key challenges
2. What is Sprink?
3. **The Global Centre for Healthy Food Environments**
4. Our research
5. Engaging with us



# Healthy Hospital Day, Oxford, 3<sup>rd</sup> July 2013



## LEADERSHIP

### 'Healthy hospitals' initiative is bearing fruit

By Edward Maile, Thomas Kelly, Helen MacMullen, Oliver Mytton, Keith Ruddle | 7 March 2014



1 Comment



A group of doctors explain how they used 'positive deviance' to promote healthy behaviours and lifestyle choices among staff and patients



# Vision



*Healthy Food Environments are food environments underpinned by the latest evidence, that enable and promote healthy, sustainable and ethical diets, with the food being tasty and affordable, as determined by different socio-cultural and socio-economic groups across populations.*

*We focus on Healthy Food Environments within health care settings.*

# Activities

---



## Focus 1

### Community

Building the community of organisations working to implement Healthy Food Environments in health care settings.



## Focus 2

### Implementation

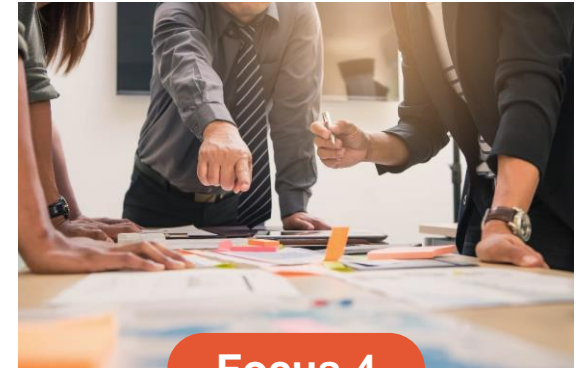
Building international communities of practice to support health care systems to work together to develop Healthy Food Environments.



## Focus 3

### Research

Undertaking research to continue to develop the concept of Healthy Food Environments and our approaches to implementing them.



## Focus 4

### Education

Equipping people with the skills and knowledge to implement a Healthy Food Environment in their health care setting.

# **Agenda**

1. **Global food system: Key challenges**
2. **What is Sprink?**
3. **The Global Centre for Healthy Food Environments**
4. **Our research**
5. **Engaging with us**



# Defining a Healthy Food Environment in a Health Care Setting

---



## **Conducted a rapid literature review**

Academic & grey literature.



## **Convened a Community of Experts**

Varied disciplines, geographies and organisations.

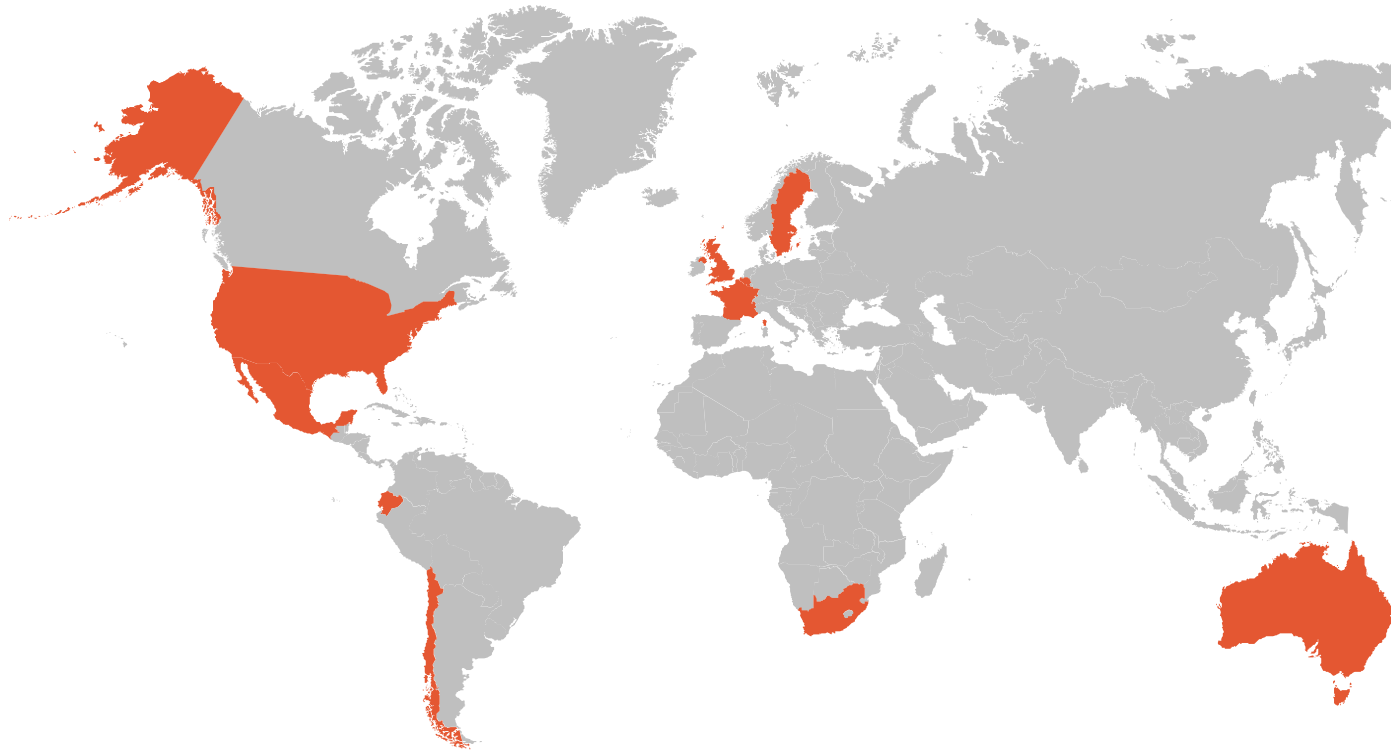


## **Completed a modified-Delphi process**

To reach consensus on the definition.

# The Community of Experts

---



**Our Community of Experts ensured the validity and relevance of our research.**

Expertise included public health, academia, nutrition, health policy, food policy, behavioural science, and environmental science.

**17**  
Experts

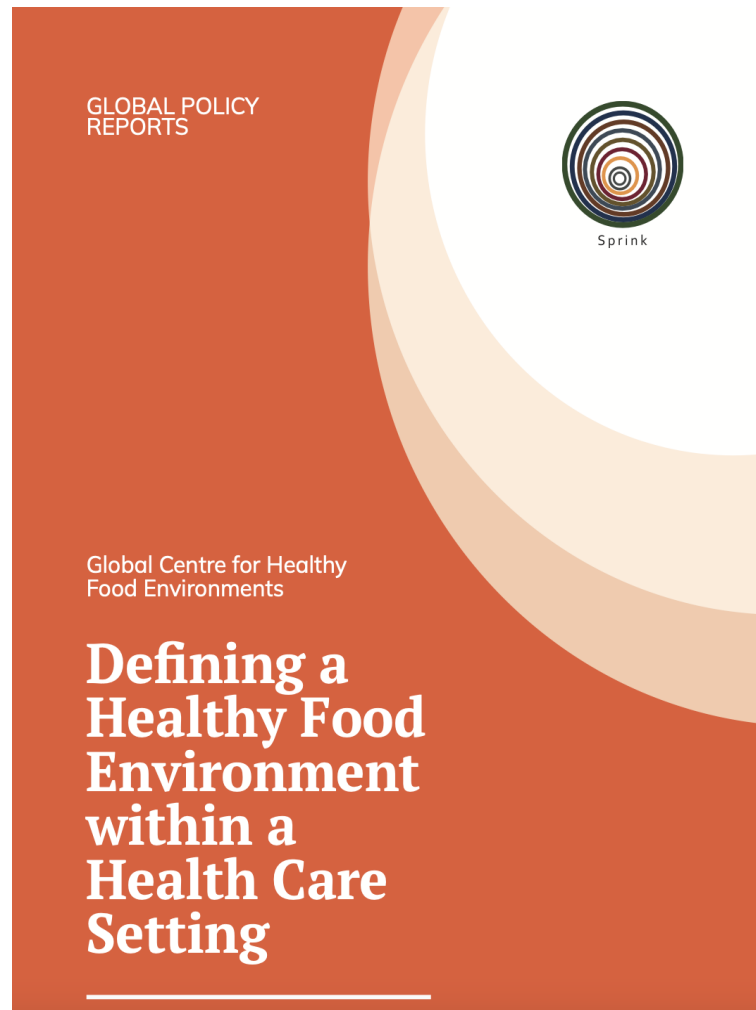
**10**  
Countries

**5**  
Continents



# Our definition

---



## Definition

*“Healthy Food Environments in Health Care Settings provide a diverse range of accessible and delicious food and drink options which benefit the health of the consumer; have surrounding environments which encourage healthy eating; and serve food produced in a way which is sustainable and ethical for the planet, humans, and animals.”*



**Next research question:**

**How can Healthy Food Environments be successfully implemented in health care settings?**



# **Agenda**

1. **Global food system: Key challenges**
2. **What is Sprink?**
3. **The Global Centre for Healthy Food Environments**
4. **Our research**
5. **Engaging with us**



# Membership model

---



## Aim

To create a community of organisations with a shared focus on developing Healthy Food Environments.



## Format

Hospitals, industry, universities & governments.



## Activities

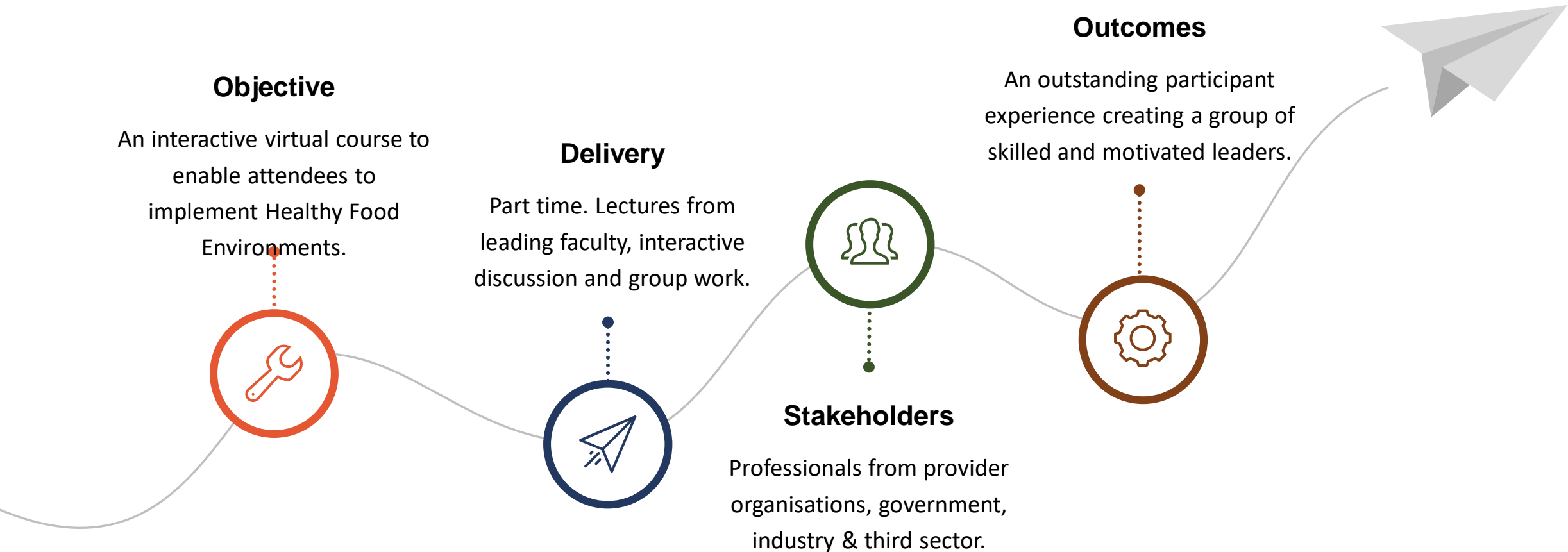
Shape and participate in our research, education, implementation and community.





# GCHFE virtual education programme

Pre-registration open now.  
40% discount for HCA  
Forum attendees.



# Bespoke services

---



**Focussed, in-person education programmes**



**Bespoke implementation projects, e.g. staff wellbeing or decarbonisation.**



**Industry-health care system partnerships.**





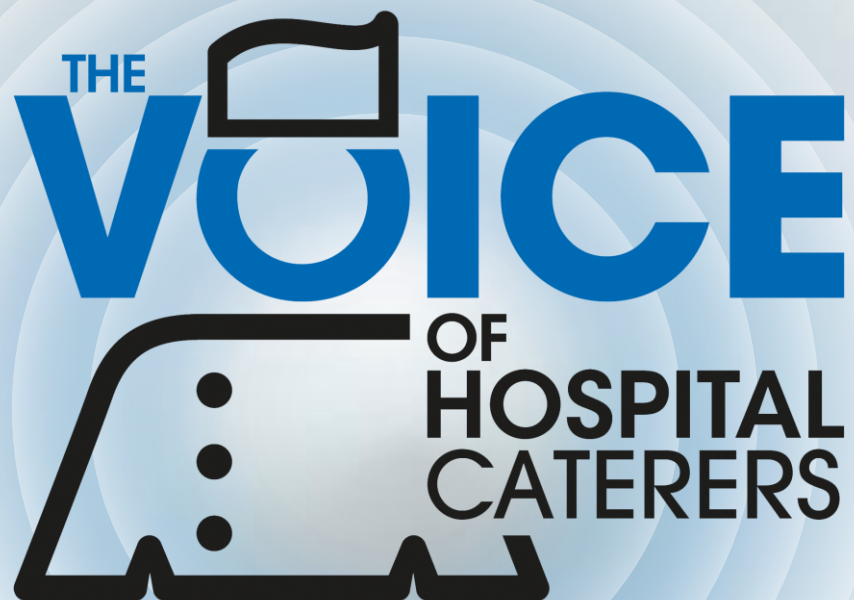
# Thank you & questions

40% education programme discount with code 'hcaforum'.



t.kelley@sprink.co.uk  
e.maile@sprink.co.uk





HCA NATIONAL LEADERSHIP & DEVELOPMENT FORUM

---

Thursday 20th and Friday 21st April 2023  
**Hilton Birmingham Metropole, NEC**