

FOOD PRODUCTION AND HEALTH CARE

HOSPITAL CATERERS' ASSOCIATION

Philip Hambling
Head of Food and Farming



WHAT IS THE NFU?



National Union of
England and Wales



Represents 55,000
farmers and growers



Policy
Development



Communications



Membership
services



WHAT DO WE DO

Voice of
British Farming



Professional
representation



Business
support



Political
leadership

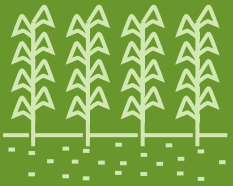


Advocacy
and campaigns





OUR SECTORS



Crops



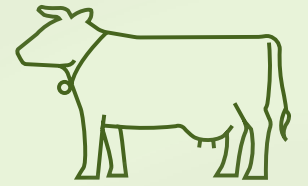
Horticulture &
Potatoes



Poultry



Dairy



Livestock







POLICY PRIORITIES

Shape	Domestic Agricultural Policy Transition
Advocate	Productivity and resilience schemes
Influence	UK Trade negotiations with EU and 3rd countries
Promote	Our Net Zero ambition and farming's voice
Strengthen	Agriculture's position in the supply chain
Develop and promote	Industry Strategies
Protect and Champion	Our member businesses



UKRAINIAN AGRICULTURAL EXPORTS

IN JANUARY-MAY 2019



TOP-6 MOST EXPORTED PRODUCTS



corn
\$3 BLN
(33%)



sunflower oil
\$1,9 BLN
(21%)



wheat
\$1 BLN
(11%)



oil cake
\$0,48 BLN
(5,3%)



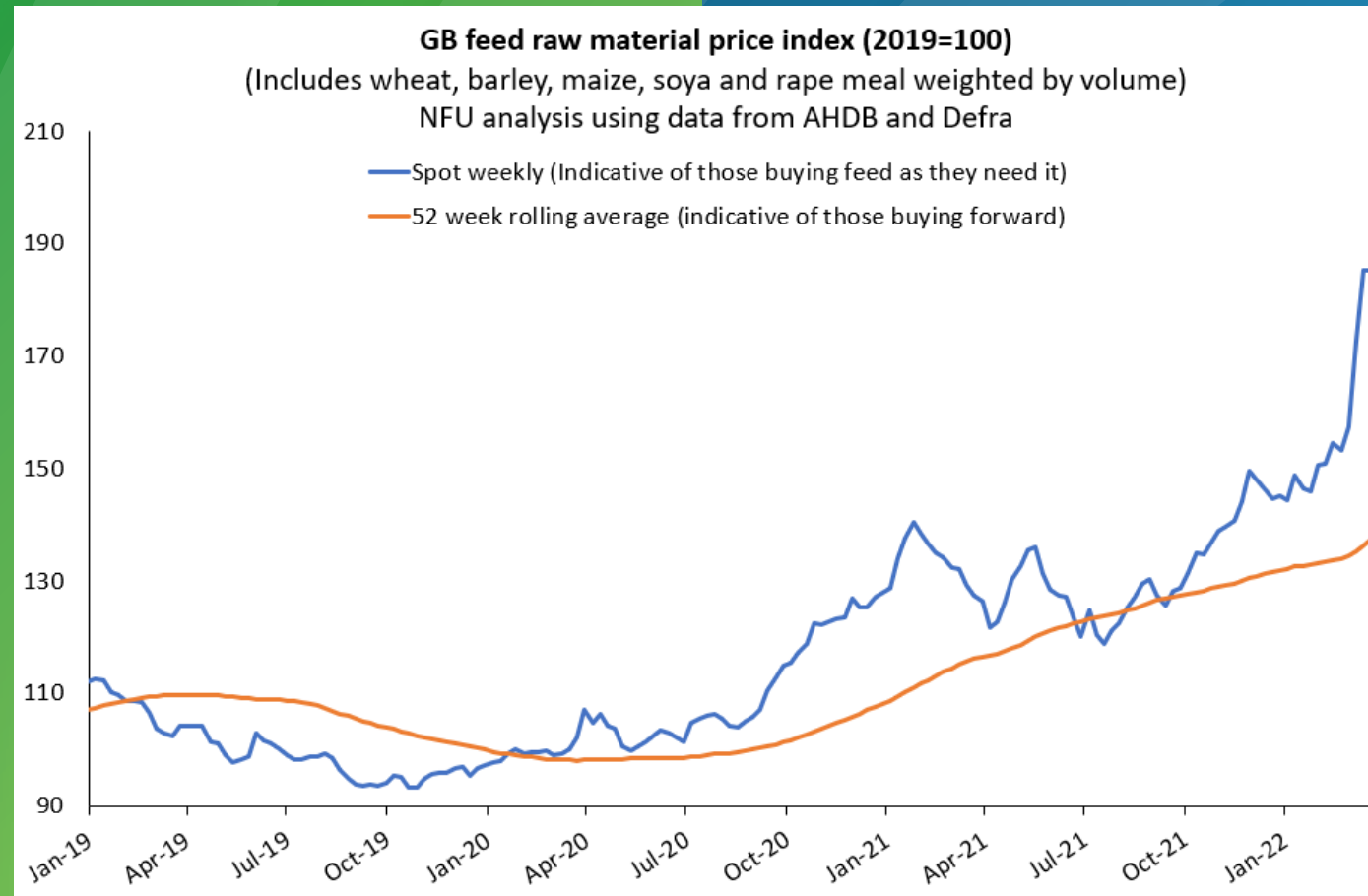
soybean
\$0,43 BLN
(4,8%)



poultry meat
\$0,26 BLN
(2,9%)

Beeld: ©Ministry of Agrarian Policy of Ukraine / Ministry of Agrarian Policy of Ukraine

Feed costs up 20% in the first month of the conflict on top of existing inflation



Huge volatility and inflation in gas markets



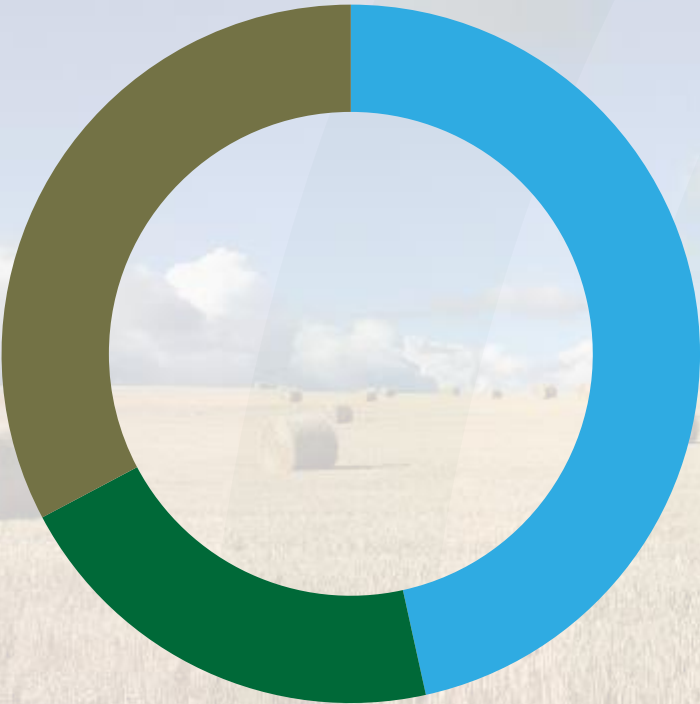
ACHIEVING NET ZERO



Farming's 2040 goal



NET ZERO 2040 AMBITION



- Productive efficiency
- Natural carbon capture
- Bioenergy with carbon capture



No export of production



Agriculture's annual emissions 46.5MtCO₂e

Pillar 1

Boosting productivity and reducing emissions

Estimated GHG savings: 11.5 MtCO₂e/year

Improving farming practices to improve productivity and reduce emissions. This includes:

- Optimising fertiliser and pesticide use
- Reducing tillage and improving soil health
- Using precision farming techniques
- Improving livestock management

Investing in research and development to develop new technologies and practices that can improve productivity and reduce emissions. This includes:

- Developing new crop varieties
- Improving livestock breeding
- Developing new farming equipment

Supporting farmers to adopt new technologies and practices. This includes:

- Providing training and advice
- Offering financial incentives
- Establishing demonstration farms

Pillar 2

Farmland carbon storage

Estimated GHG savings: 9 MtCO₂e/year

Increasing the amount of carbon stored in farmland soils. This includes:

- Planting cover crops
- Using no-till or reduced tillage
- Rotational grazing
- Planting trees on farmland

Protecting and restoring natural habitats on farmland. This includes:

- Creating wildlife corridors
- Restoring peatlands
- Planting native trees and plants

Measuring and verifying carbon storage on farmland. This includes:

- Using soil sampling
- Using remote sensing
- Establishing carbon credits

Pillar 3

Coupling bioenergy to carbon capture, utilisation and storage

Estimated GHG savings: Up to 26 MtCO₂e/year

Developing bioenergy crops that can be used for energy production. This includes:

- Growing energy crops on marginal land
- Improving bioenergy crop yields
- Developing new bioenergy technologies

Integrating bioenergy production with carbon capture and storage. This includes:

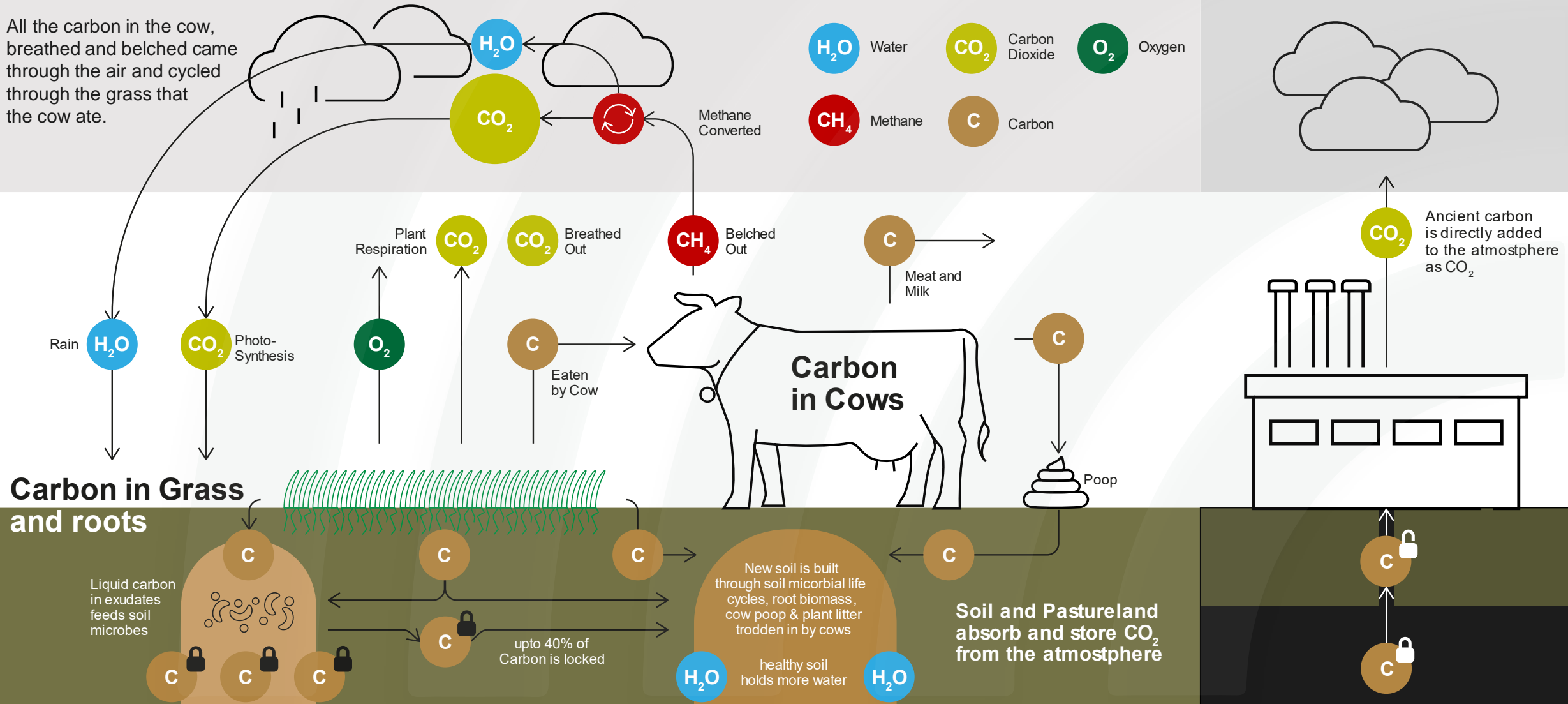
- Building bioenergy plants with CCS
- Transporting and storing CO₂
- Using CO₂ for industrial purposes

Supporting the development of a bioenergy and carbon capture and storage sector. This includes:

- Providing training and advice
- Offering financial incentives
- Establishing demonstration projects

THE COW'S CARBON CYCLE

All the carbon in the cow, breathed and belched came through the air and cycled through the grass that the cow ate.



Global context – understanding where we are

British red meat and dairy
have a lower GHG footprint
than the global average

kgs CO₂e per kilo/litre

1.25kgs

British footprint



2.9kgs

Global footprint

17.12kgs

British footprint



46kgs

Global footprint

14.6kgs

British footprint



24kgs

Global footprint

DID YOU KNOW?

THE DIET OF A TYPICAL BRITISH BEEF COW IS:

FODDER BEET
2%

SILAGE FROM
OTHER CROPS
17%

GRAINS
5%

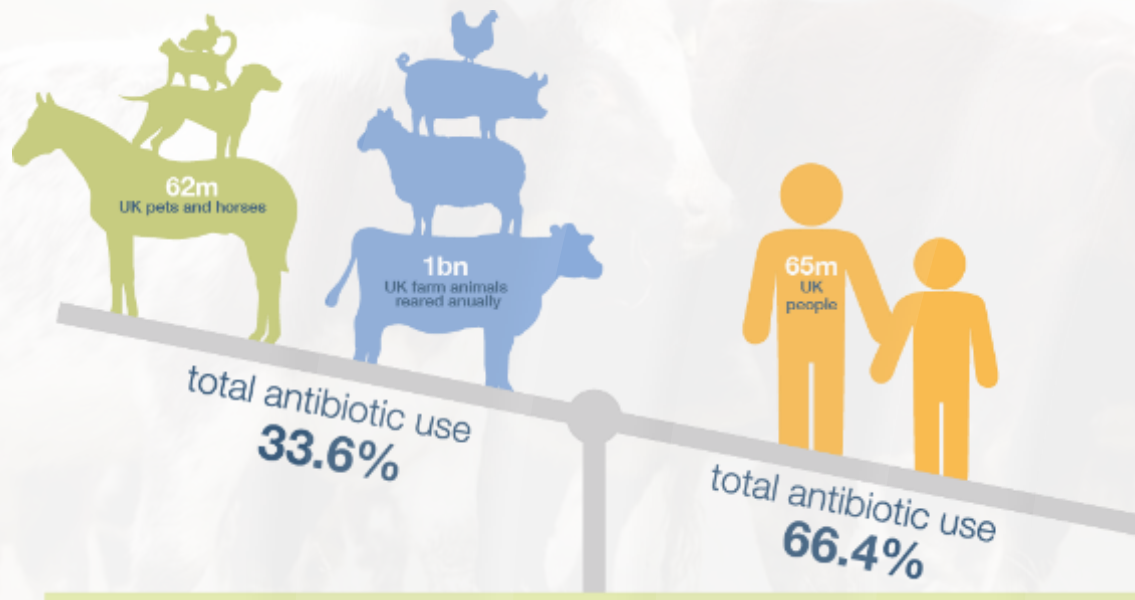


BY PRODUCTS
FROM CROPS
6%

GRASS
70%

Around 65% of UK
farmland is only
suitable for growing
grass

IN THE UK, 3x MORE ANTIBIOTICS ARE USED TO TREAT PEOPLE THAN ANIMALS.



Source: farmantibiotics.org

The amount of
antibiotics used on UK
farms has been reduced by

79%

Since 2014

Actions in Cereals & Horticulture





CREATING SUSTAINABLE SUPPLY CHAINS

Increasing partnership opportunities
for farmers and foodservice;



How can we deliver
net-zero supply chains?



How can we champion
British climate friendly
foods ?







NATIONAL FOOD STRATEGY

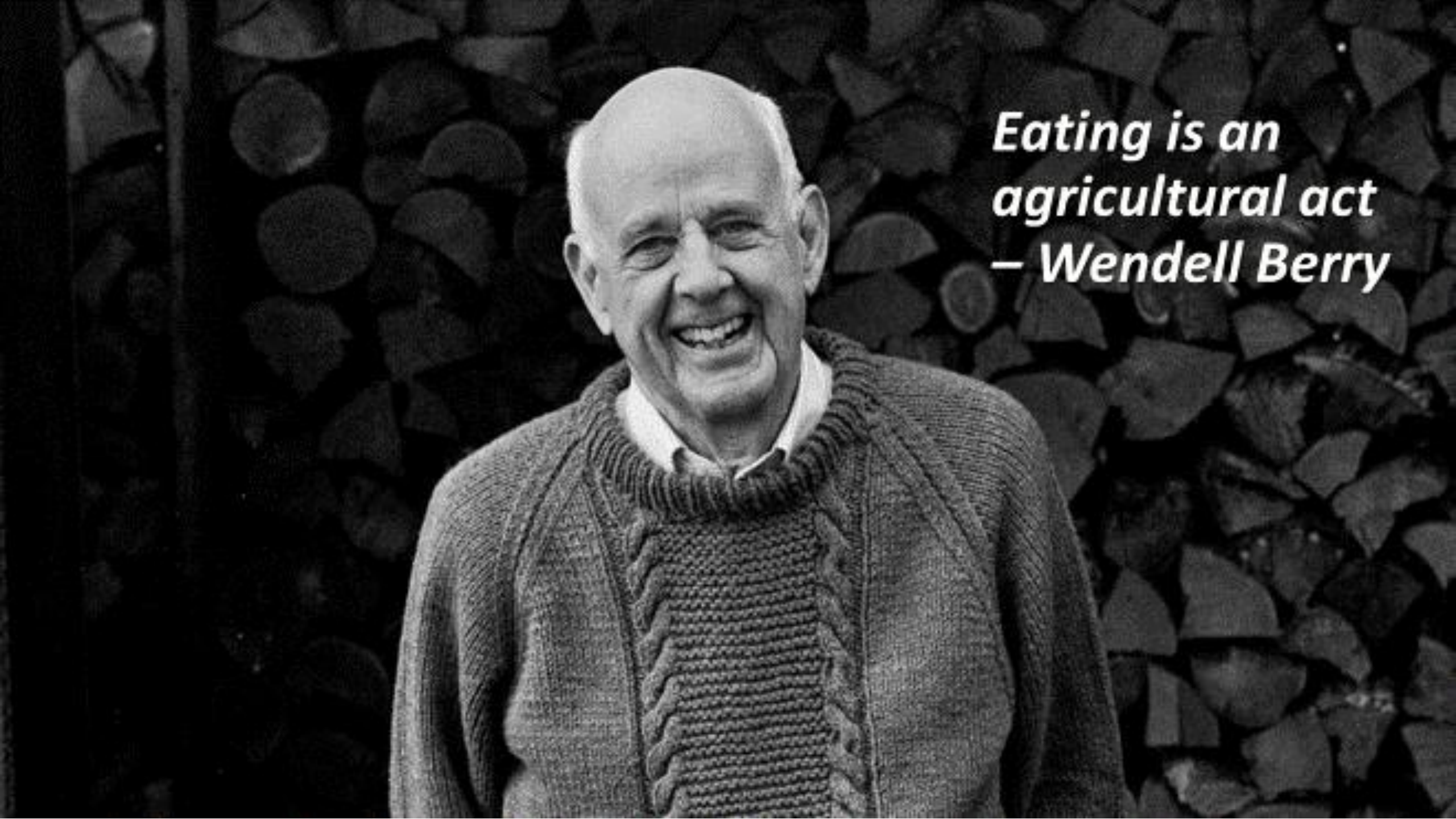


Our vision is a thriving UK farm-to-fork food sector that is innovative, collaborative and globally competitive.

Provides fantastic, affordable food sustainably and to the highest standards. That supports healthier diets and encourages better choices.

That offers exciting business and employment opportunities throughout the food chain. That reconnects people with the food they eat and the natural environment where it is grown.

And that together this creates a distinctive and much-loved food culture in every part of the country.

A black and white photograph of Wendell Berry, an older man with a balding head and a warm smile. He is wearing a dark, textured cable-knit sweater over a light-colored collared shirt. The background is a dark, out-of-focus wall with a repeating pattern of circular or leaf-like shapes. In the upper right corner, a quote is written in a white, italicized serif font.

*Eating is an
agricultural act
– Wendell Berry*

***Eating is NOT an
agricultural act –
say normal people
everywhere***



Thank you

@philiphambling

@NFUFoodChain